

Date: 10/28/2020
Project Univeristy of New Mexico Hospitals - New Hospital Tower
 2211 Lomas Blvd NE
 Albuquerque, NM 87106

Bid Package: Phase I - Make Ready
ASI #: 05

To: **AECOM Hunt**
 Attn. Marc Peck
 2120 S. Braeswood Blvd
 Houston, TX 77030

The Contract Documents for the above referenced Project are requested be modified as set forth in this ASI. The original Contract Documents and any previously issued addenda remain in full force and effect, except as modified hereby. If modifications outlined in this ASI do not impact the Project's Cost of the Work or the Contractor's Construction Schedule, this ASI shall be made part of the Contract Documents. If a change in Construction Cost, Contract Sum, and/or Contract Time is warranted, the Contractor shall submit written notice in form of a Change Proposal (CP) containing detailed information within (14) days substantiating such claim to the A/E. The claim shall be made in accordance with the provisions of the Contract Documents, and the Contractor shall submit an itemized cost breakdown showing time, material and other items affected by the change. Upon acceptance of respective CP, a Change Order shall be prepared for signatures to affect a change to the contract. The Owner's authorization is required prior to proceeding with any Work which will incur additional cost and/or time.

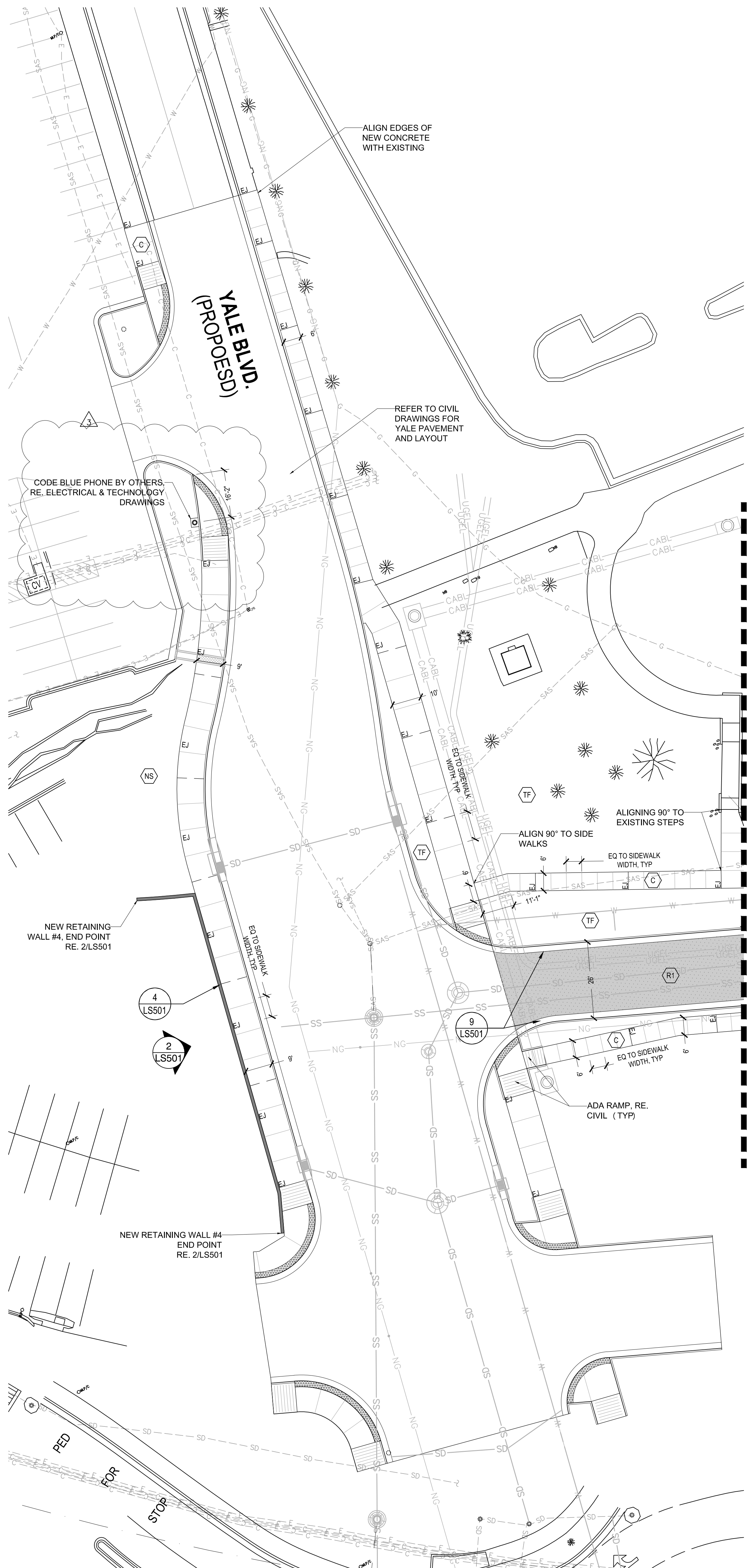
No	Doc Ref	Revision description
Landscape		
1	LS101	North code blue phone location and notes added, per the owners request.
Electrical		
1	ESD100.MR	Updated Make Ready Package scope lines to match scope shown by other disciplines. Modified scope to match updated lines. Added in the blue phone scope and associated demolition Keyed Notes #SD11, SD12, SD17, SD 29, and SD30.
2	ES100.MR	Updated Make Ready Package scope and work to match. Relocated light locations and count modified to correspond with scope. Show new work associated with updated blue phone scope and to match up better with Phase 2 work. Added in blue phone scope and new Keyed Notes #S20, S21, S22, and S23.
Technology		
1	T-050.MR	North code blue phone location and notes added.

HDR Architecture, Inc./ FBT Architects

Cc: Design Team
 File

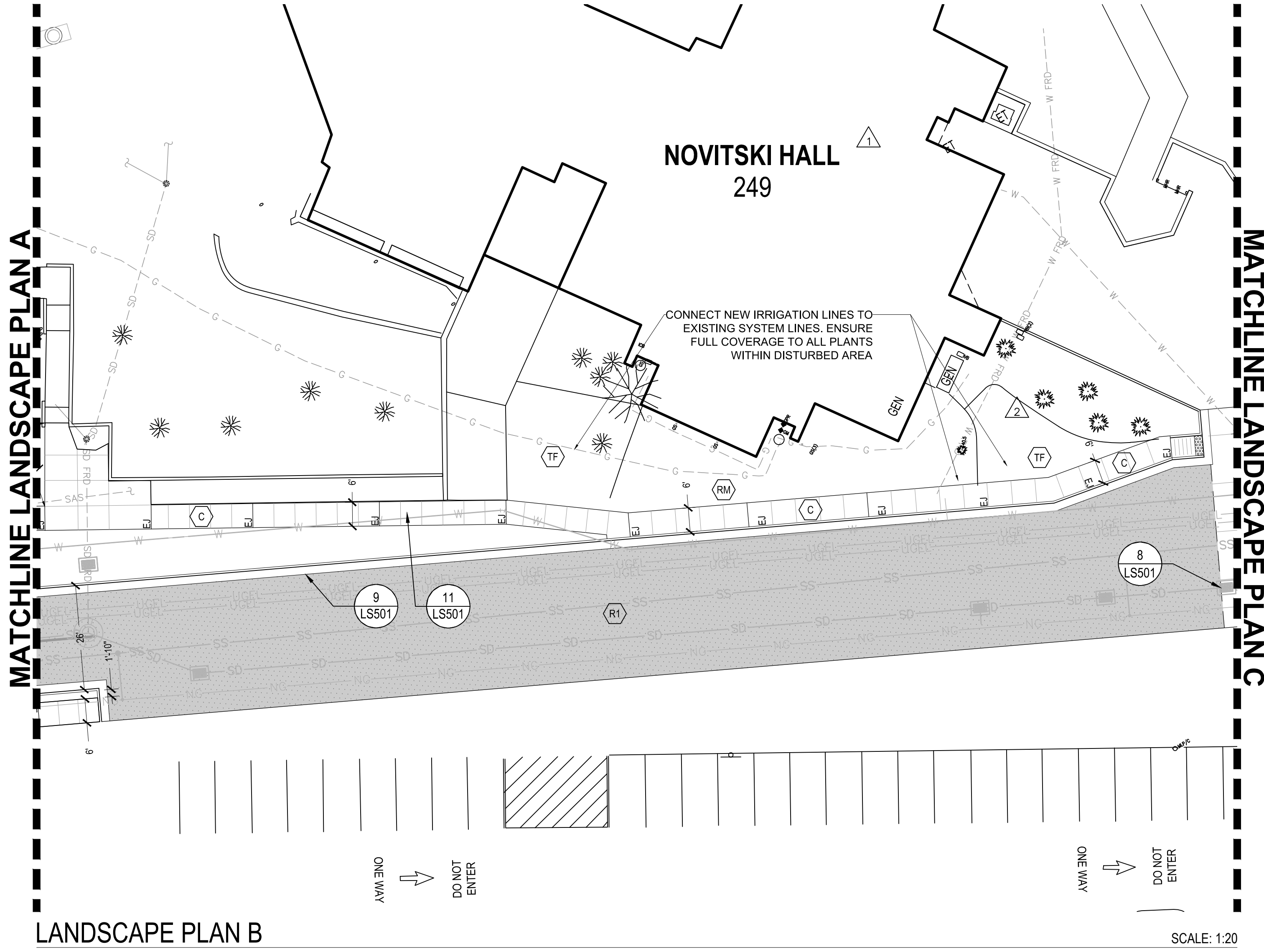
01/29/2022 4:45:03 PM BIM 360://1018896 UNIV. NMHT/1018896-A11-CENTRAL.rvt

0 12" 1'



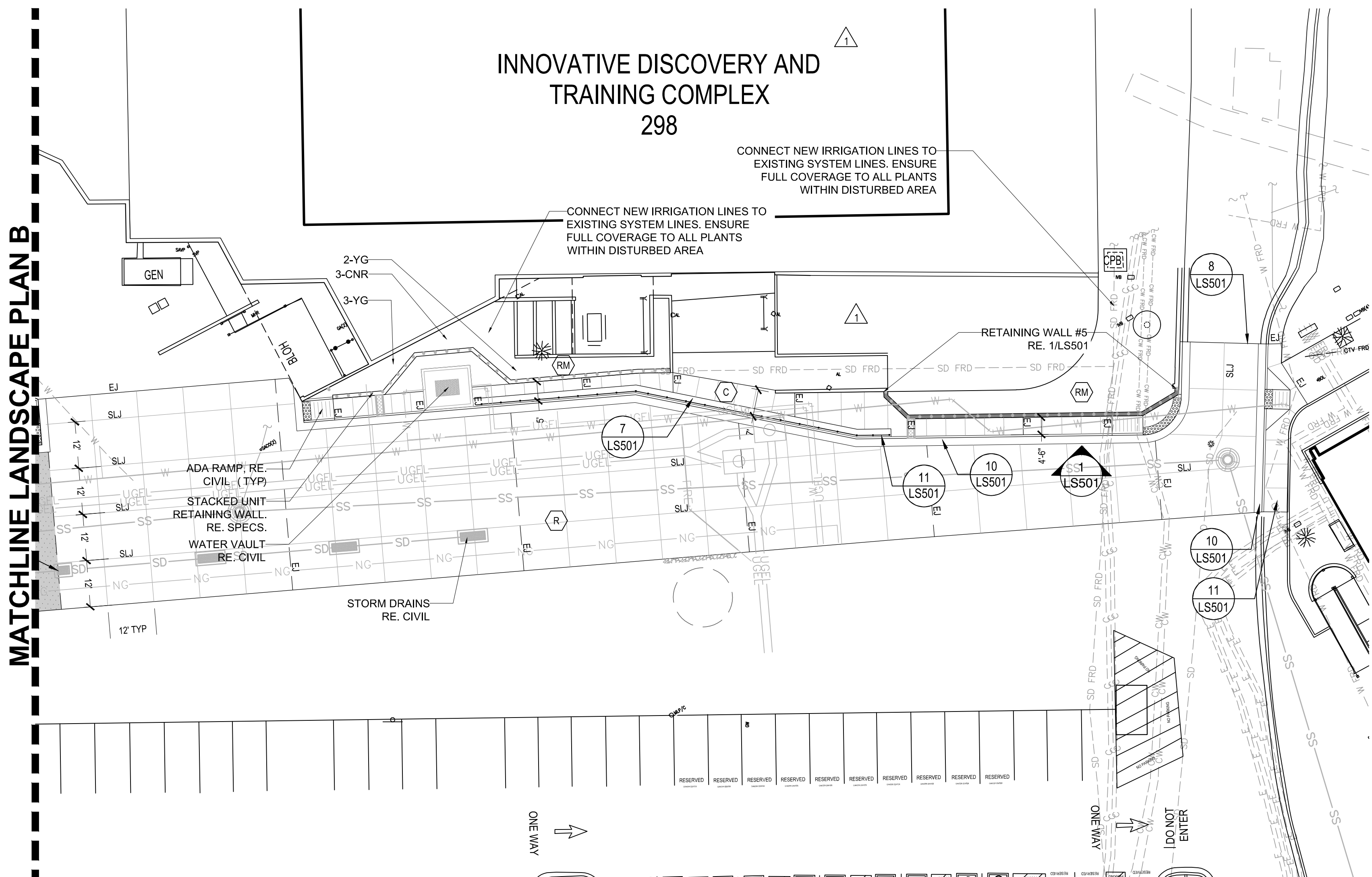
LANDSCAPE PLAN A

SCALE: 1:20



LANDSCAPE PLAN B

SCALE: 1:20



LANDSCAPE PLAN C

SCALE: 1:20

PLANTING LEGEND	
	Chrysothamnus nauseosus var. nauseosus
	Dwarf Rabbitbrush - CNR
	Yucca glauca - Soapweed - YG
	ROCK MULCH AREA TO BE RESTORED
	ROLLED TURF SOD, RE. SPEC.
	NATIVE SEED, RE. SPEC.

- NOTE:
1. PLANT QUANTITIES SHOWN ON PLANS
 2. SHRUBS TO BE 5 GAL. CONTAINERS
 3. PERENNIALS TO BE 1 GAL. CONTAINERS
 4. CONTRACTOR TO REPLACE ANY DAMAGED PLANTS NOT WITHIN THE CONSTRUCTION LIMITS AT NO COST TO THE CLIENT OR PROJECT.

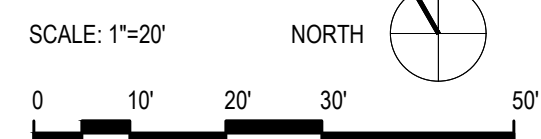
MATERIALS LEGEND	
	SIDE WALK PAVING RE. SPEC.
	CONCRETE ROADWAY PAVING RE. SPEC.
	ASPHALT ROADWAY PAVING RE. CIVIL
	ROCK MULCH TO MATCH EXISTING RE. SPEC.
	NATIVE SEED RE. SPEC.
	TURF - ROLLED SOD RE. SPEC.

LAYOUT LEGEND	
	DIAMETER
	RADIUS
	DIMENSION
	CENTERLINE FOR LAYOUT
	ARC LENGTH
	ALIGN

ABBREVIATIONS	
POB - Point of Beginning	EO - Equal
POC - Point of Curvature	PI - Point of Intersection
POT - Point of Tangency	EP - End point
PERP - Perpendicular	PAR - Parallel

HARDSCAPE LEGEND	
	MATCHLINE
	LIMIT OF WORK (L.O.W.)
	ASPHALT PAVING
	CURB AND GUTTER
	CIP CONC. RETAINING WALL
	STACKED UNIT RETAINING WALL
	EXPANSION JOINT
	SAWED LONGITUDINAL JOINT
	CONTRACTION JOINT

- NOTE:
1. REFER TO RESPECTIVE PHASE DOCUMENTS FOR FULL SCOPE AND DELINEATION OF PHASE CONSTRUCTION SCOPE ITEMS
 2. REFER TO IRRIGATION NOTES LOCATED ON L-101 FOR IRRIGATION SYSTEM RECONNECTIONS AND NEW SYSTEMS.



HDR Architecture
1670 Broadway
Suite 3400
Denver, CO 80202

fbt architects
6501 Americas Pkwy NE, Ste. 300
Albuquerque, NM 87110

UNIVERSITY OF NEW
MEXICO HOSPITALS
New Hospital Tower

PHASE I - MAKE READY
100% CD

1919 Lomas Blvd. NE
Albuquerque, NM 87131



HOSPITALS

Project Manager	DANIEL KUNZMANN (HDR)
Project Designer	AARON HARCEK (HDR)
Project Architect	RAPHAEL CHAVEZ (HDR)
Landscape Architect	ANTHONY MAZZEO (HDR)
Civil Engineer	JEFF MULBERRY (BOHANNAN HUSTON)
Structural Engineer	GEORGE BRADLEY (CHAVEZ-GRIEVES)
Mechanical Engineer	MATTHEW PALAZZETTI (HDR)
Electrical Engineer	SCOTT KLAUWITTER (HDR)
Plumbing Engineer	JOSEPH MESSINA (HDR)
Interior Designer	CHERIE DICE (HDR)
Equipment Planner	KEVIN KLASIC (SHEN MILSOM & WILKE)
Wayfinding	CHRIS BAUER (FOCUS EDG)

MARK	DATE	DESCRIPTION
1	05/29/2020	Addendum # 1
2	08/05/2020	Phase I ASI 003
3	10/26/2020	Phase I ASI 005

Project Number
Original Issue

1018896
05/15/20

Sheet Name

PHASE I
LANDSCAPE PLAN

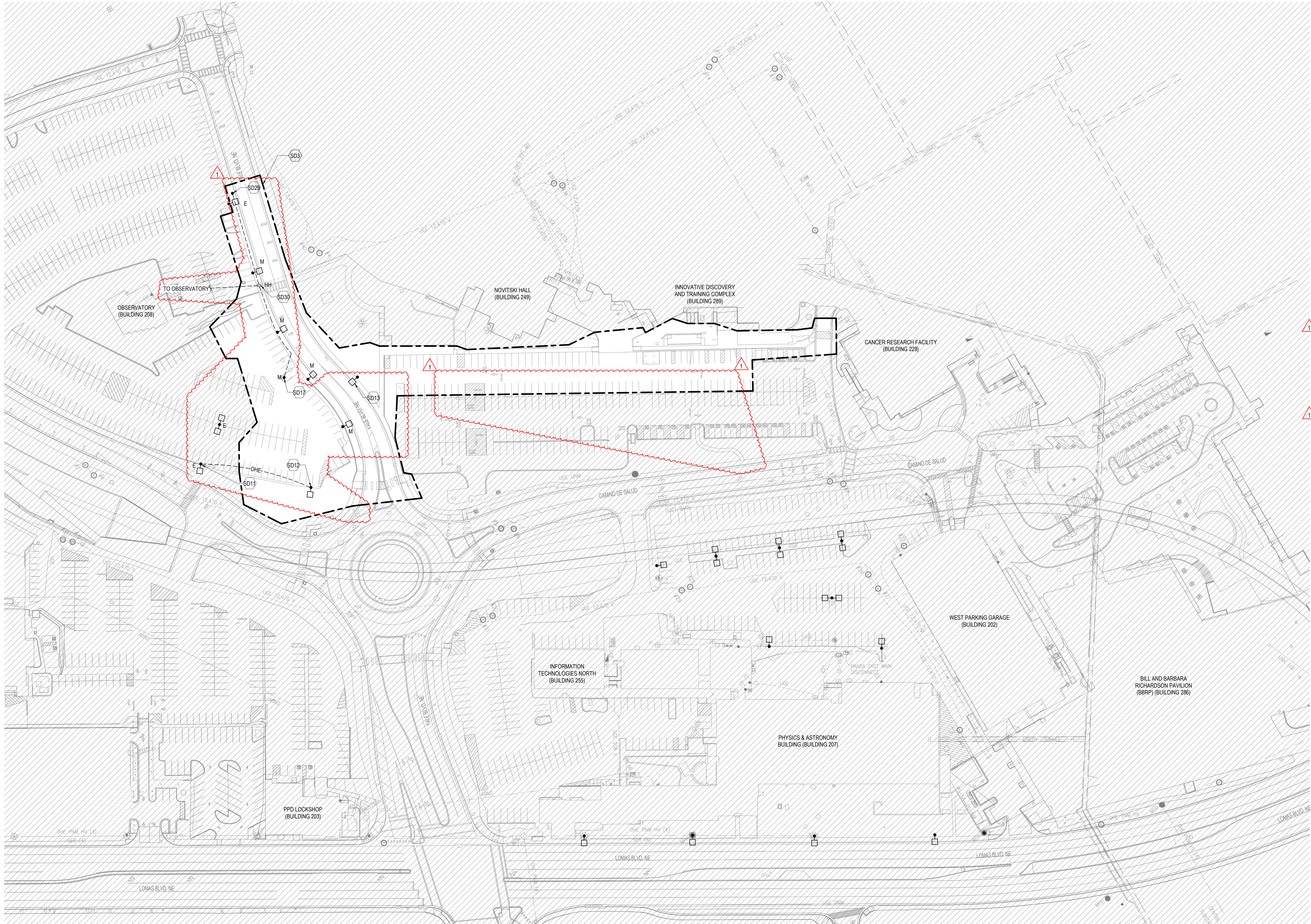
Sheet Number

LS101

Project Status

PHASE I - MAKE READY -100% CD

1/26/2020 5:05:19 PM BIM 360://10168896 UNMH_NH710168896_PRC-E-CENTRAL.rvt



A5 MAKE READY - ELECTRICAL DEMOLITION PLAN
1" = 60'-0"

SITE DEMOLITION GENERAL NOTES	
A.	ALL DEMOLITION WORK SHALL BE COORDINATED WITH THE GENERAL CONTRACTOR'S PHASING PLAN, UNM, AND UNMH. VERIFY BUILDINGS ARE EMPTY AND PROVIDE WRITTEN NOTIFICATION TO UNM AND UNMH WHEN THE POWER TO THE BUILDING(S) WILL BE TURNED OFF AND PREPARED FOR DEMOLITION.
B.	ALL SITE EQUIPMENT AND BUILDING SERVICE EQUIPMENT SHOWN TO BE REMOVED OR DEMOLISHED SHALL BE TURNED OVER TO EITHER UNM OR UNMH FOR FIRST RIGHT OF REFUSAL. ANYTHING NOT CLAIMED BY UNM OR UNMH SHALL BE THE CONTRACTORS RESPONSIBILITY TO REMOVE.
C.	EXISTING DUCTBANKS ARE SHOWN FOR REFERENCE ONLY. CONTRACTOR SHALL VERIFY ALL EXISTING MEDIUM VOLTAGE DUCTBANKS AND UNDERGROUND CONDUITS IN AREAS OF WORK EXISTING TO REMAIN MEDIUM VOLTAGE DUCTBANKS SHALL BE IDENTIFIED, MARKED, AND PROTECTED DURING DEMOLITION AND EXCAVATION. PROVIDE REQUIRED PROTECTION AND SHORING TO ALLOW FOR OVER EXCAVATION WHERE NEEDED.
D.	ALL DUCTBANKS ABANDONED AS PART OF THIS WORK SHALL BE REMOVED BACK TO THE NEXT ACTIVE MANHOLE. EXISTING TO REMAIN ANY SWITCH, OR TO THE LIMITS OF THE CURRENT DEMOLITION AREA. THOSE ONLY TAKEN BACK TO THE LIMITS OF DEMOLITION WORK SHALL BE MARKED AND INDICATED ON AS-BUILT DRAWINGS. REMOVE ANY CABLING AND TURN OVER TO UNM FOR FIRST RIGHT OF REFUSAL.
E.	ALL EXISTING SITE LIGHTING IN THE DEMOLITION AREA SHALL BE TAKEN DOWN AND TURNED OVER TO UNM OR POSSIBLY STORED FOR USE IN NEW AREAS WITH SIMILAR LIGHT POLES. REMOVE CONDUIT AND WIRING BACK TO NEXT ACTIVE LIGHT, CONTROLLER, OR SOURCE. FIXTURES TO BE RELOCATED WILL BE IDENTIFIED IN FUTURE PHASES OF DESIGN.
F.	COORDINATE DEMOLITION WORK WITH EXISTING SITE IT AND FIBER RUNS. SEE TECHNOLOGY AND CIVIL DRAWINGS.
KEYNOTES - SHEET	
SD3	CURRENT LIMITS OF SITE DEMOLITION. SITE LIGHTING WILL NEED TO BE REMOVED IN THIS AREA PER CONSTRUCTION DEMOLITION AND NEW PHASING PLANS. DISCONNECT LIGHTS AND REMOVE CONDUCTORS AND DUCTBANKS/CONDUITS BACK TO CONTROLS, MANHOLE, OR NEXT ACTIVE DEVICE. SOME LIGHTING OR TEMPORARY SITE LIGHTING MAY NEED TO BE PROVIDED BASED ON CONSTRUCTION PHASING. LIGHTS TO BE RELOCATED WILL NEED TO BE TIED BACK INTO EXISTING TO REMAIN SITE LIGHTING CIRCUITS AND CONTROLS.
SD11	EXISTING PNM POLE MOUNTED PARKING LIGHT TO REMAIN.
SD12	EXISTING PNM POLE MOUNTED PARKING LOT LIGHTS AND OVERHEAD CONDUCTORS TO BE REMOVED. COORDINATE DISCONNECTION AND REMOVAL WITH CONTRACTOR SITE PHASING PLAN AND PNM. PNM TO DISCONNECT AND REMOVE CONDUCTORS BACK TO NEXT ACTIVE MANHOLE OR FIXTURE TO REMAIN. TURN FIXTURES OVER TO PNM.
SD13	EXISTING POLE MOUNTED FIXTURE COMMON THROUGHOUT THE SITE. FIXTURE(S), IN THE SCOPE OF WORK LIMITS FOR THIS PHASE OF THE PROJECT, WILL NEED TO BE REMOVED AND EITHER RELOCATED OR TURNED OVER TO UNM TO MAKE WAY FOR THE NEW VALE STREET AND PARKING LOT WORK. COORDINATE ALL REQUIRED WORK WITH THE LIMITS OF WORK FOR THIS PHASE AND EXISTING SITE LIGHTING.
SD17	EXISTING EMERGENCY BLUE PHONE BOLLARDS TO BE RELOCATED IN PHASE II. SEE SHEET ES100 IN THAT PHASE OF WORK FOR NEW LOCATION. PROTECT AND STORE OR TURN OVER TO UNM IT UNTIL IT CAN BE INSTALLED IN ITS NEW LOCATION.
SD29	EXISTING CODE BLUE PHONE TO BE REMOVED AND REPLACED. NEW LOCATION TO BE SHOWN ON SHEET ES100.MR.
SD30	EXISTING HANDHOLES IN THE SIDE WALK FOR POWER AND COMMUNICATIONS TO THE EXISTING CODE BLUE PHONES BE REMOVED/RELOCATED. COORDINATE DEMOLITION TO PULL CABLES BACK TO THE OBSERVATORY AND MODIFY EXISTING CONDUITS TO EXTEND TO NEW HANDHOLE LOCATION SHOWN ON SHEET ES100.MR. VERIFY WIRING CONDITION WITH UNM IT TO DETERMINE OF ALL NEW WIRING AND CABLING WILL NEED TO BE PROVIDED FROM THE OBSERVATORY.



HDR Architecture
1670 Broadway
Suite 3400
Denver, CO 80202

fbt Architects
6501 AMERICAS PKWY NE., STE. 300
ALBUQUERQUE, NM 87110

UNIVERSITY OF NEW MEXICO HOSPITALS
New Hospital Tower

PHASE I - MAKE READY
100% CD

2211 LOMAS BLVD. NE
ALBUQUERQUE, NM 87106



HOSPITALS

MARK	DATE	DESCRIPTION
1	10/28/2020	PHASE-1 ASI 005

Project Number 10168896
Original Issue 04/17/2020



Sheet Name

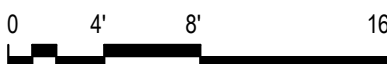
ELECTRICAL SITE
MAKE READY PLAN -
DEMO

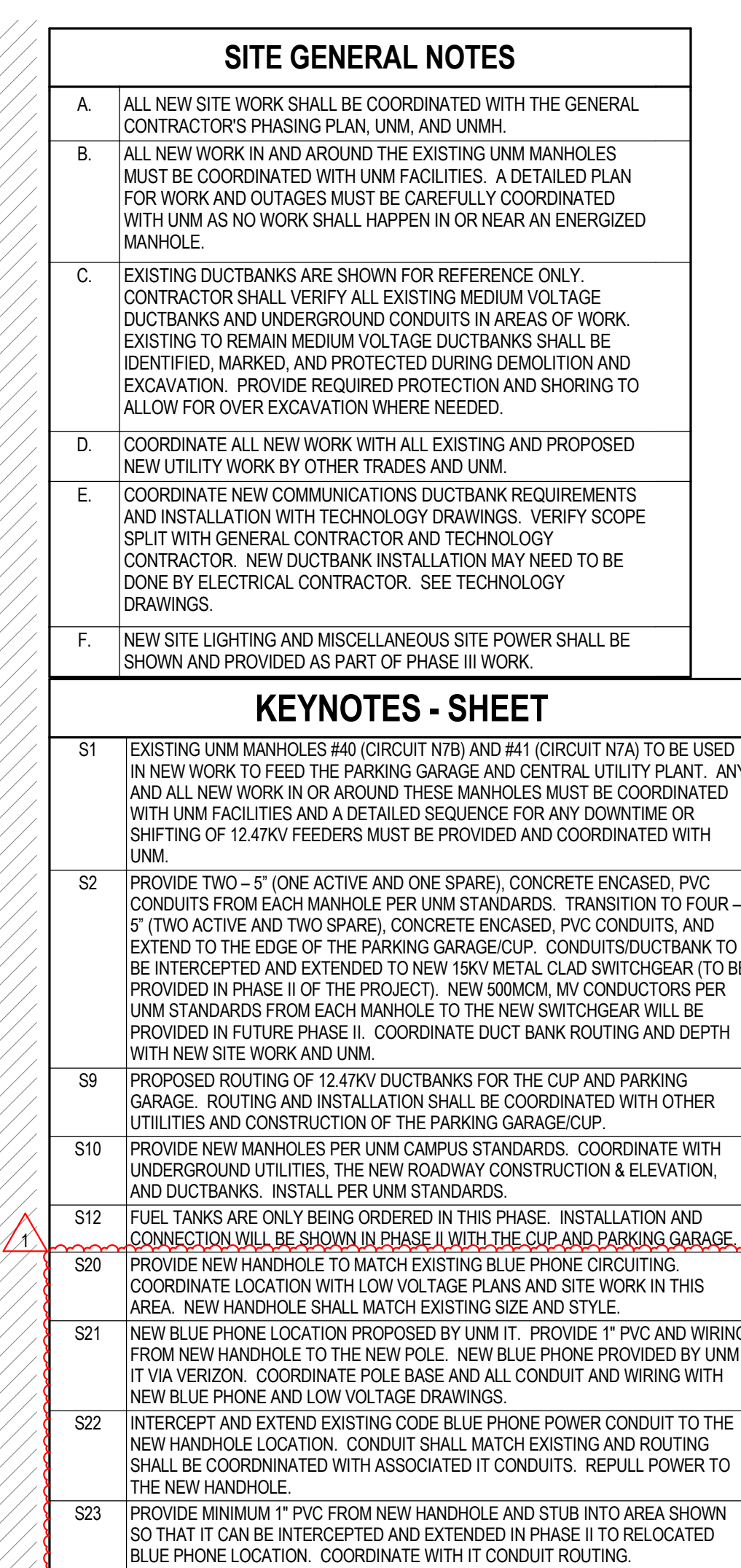
Scale
1" = 60'-0"

Sheet Number

ESD100.MR

Project Status
PHASE I - MAKE READY - 100% CD





HDR Architecture
1670 Broadway
Suite 3400
Denver, CO 80202

fbt Architects
6501 AMERICAS PKWY NE., STE. 300
ALBUQUERQUE, NM 87110



NEW MEXICO
HOSPITALS

MARK	DATE	DESCRIPTION
1	10/28/2020	PHASE-1 ASI 005

Project Number	10168896
Original Issue	04/17/2020



Sheet Name

ELECTRICAL SITE
MAKE READY PLAN -
NEW WORK

Scale
As indicated

Sheet Number

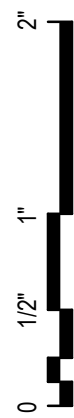
Project Status
PHASE I – MAKE READY – 100% CD

(B5) $1'' = 60'-0''$



A compass rose diagram with a circle divided into four quadrants by a vertical and horizontal line. The text 'TRUE NORTH' is written to the right of the top vertical line, with an arrow pointing to the top of the circle. Another arrow points to the top-right quadrant, indicating a magnetic north direction.

10/27/2020 2:02:21 PM BIM 360://10168896 UNMH_NH170168896_PRC-T-CENTRAL.dwg

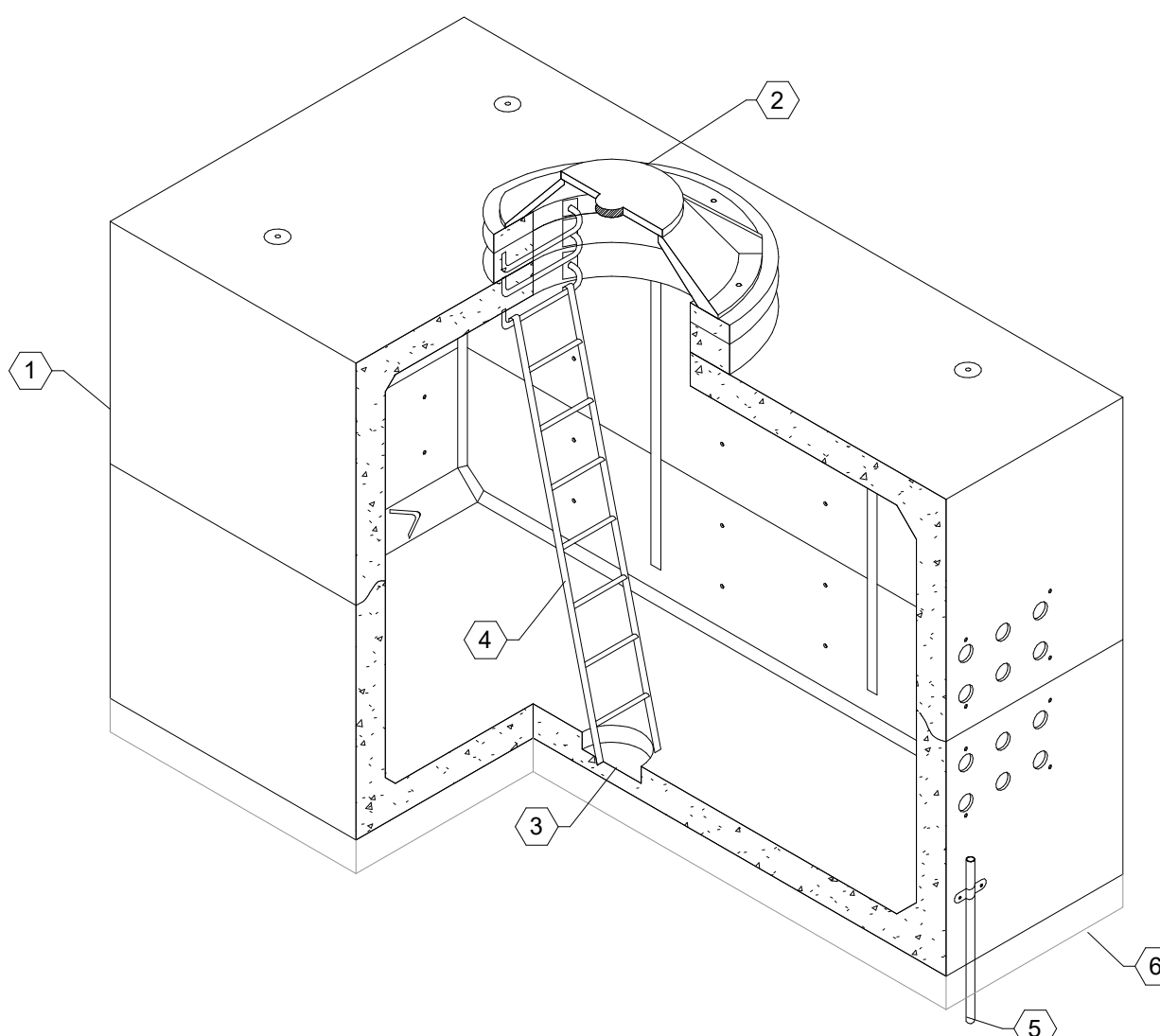


D

C

B

A



W.08

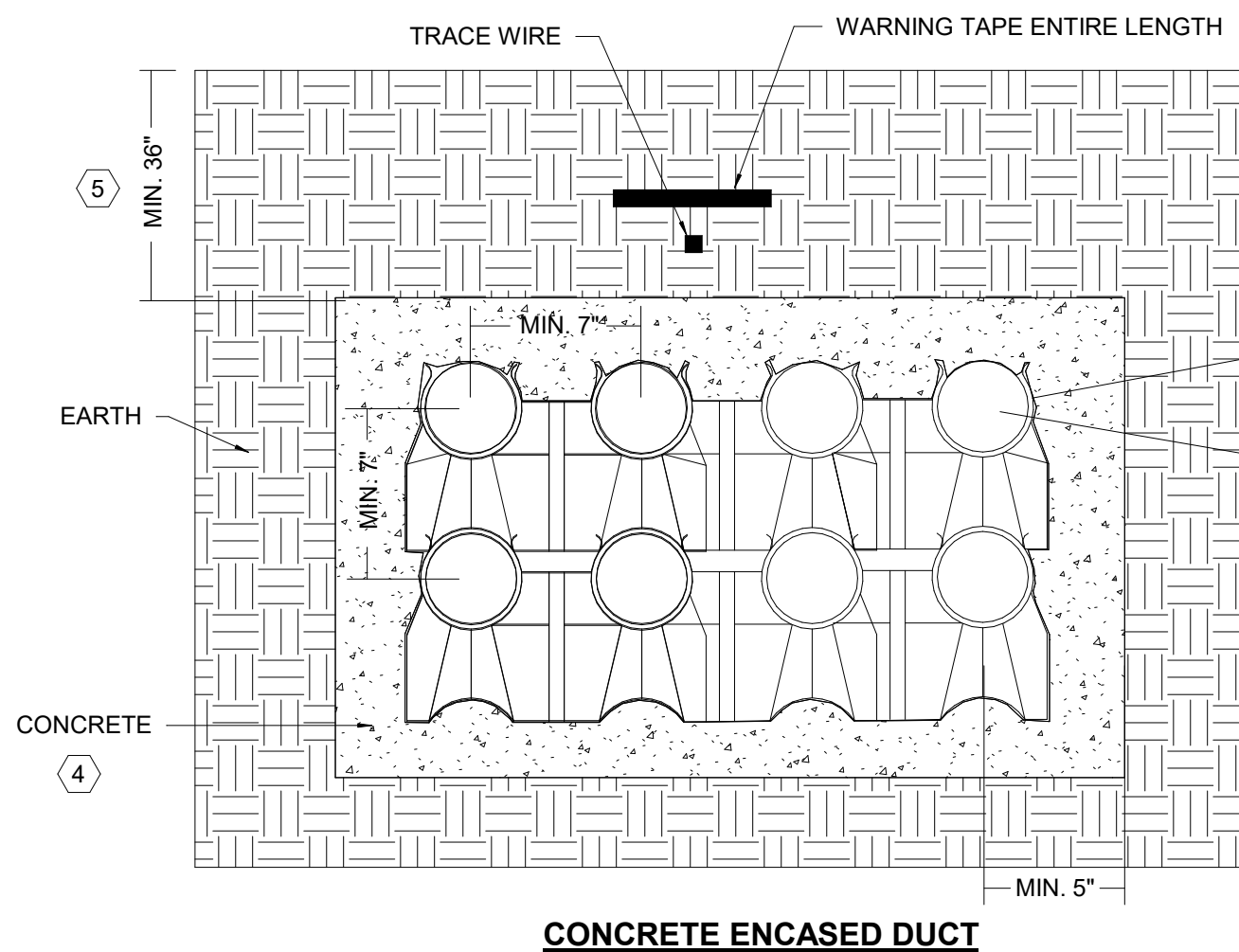
COMMUNICATIONS MANHOLE DETAIL

DETAIL GENERAL NOTES:

A. REFER TO BASIS OF DESIGN PRODUCT TO CONFIRM ADDITIONAL REQUIREMENTS SUCH AS QUANTITY, SIZE AND RATING OF UNI-STRUT, PULLING INSERTS, ETC.

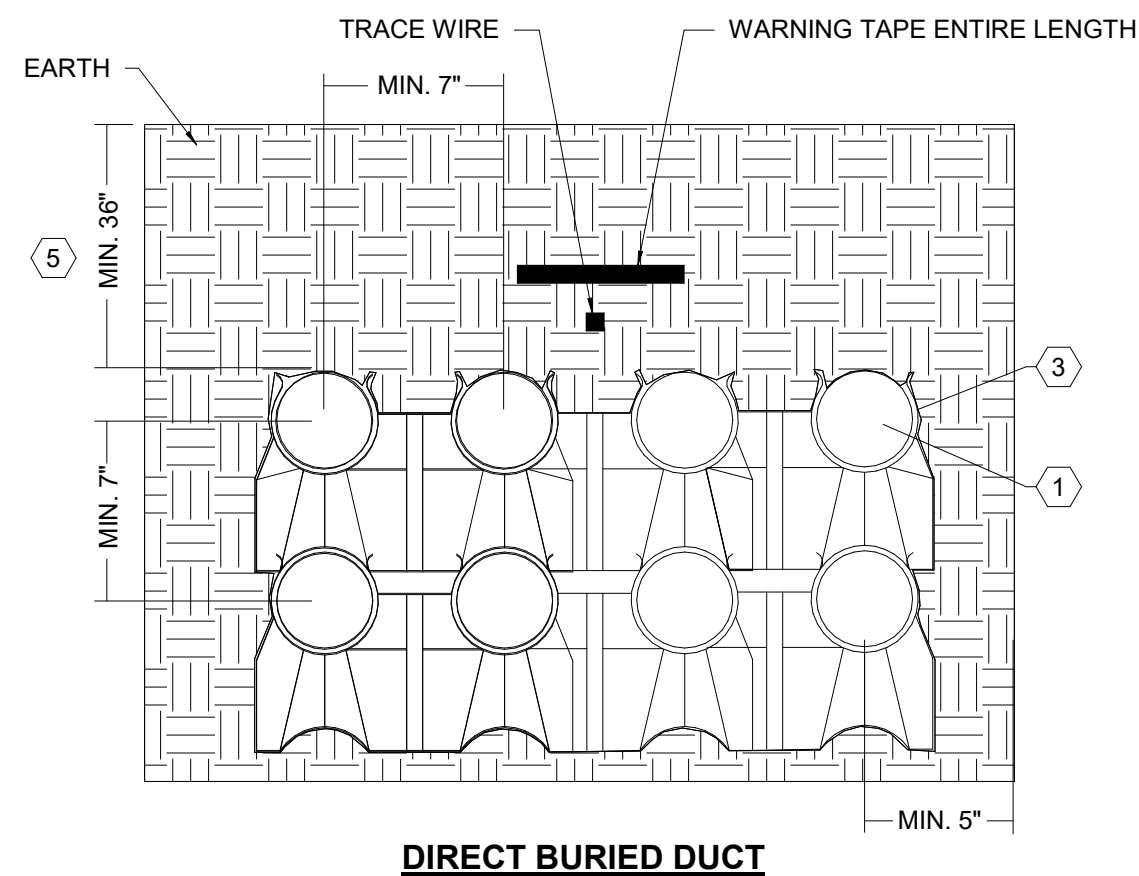
DETAIL NOTES (#)

1. MANHOLE: PROVIDE CONCRETE COMMUNICATIONS MANHOLE COMPLETE WITH PULLING INSERT AND HOLES TO ACCOMMODATE UP TO SPECIFIED QUANTITY OF CONDUITS AT EACH END. REFER TO SPECIFICATIONS FOR SIZE REQUIREMENT.
2. GRAND IRINGS AND COVER: PROVIDE RINGS AS NECESSARY TO BRING COVER UP TO GRADE. PROVIDE TRAFFIC RATED COVER THAT INCLUDES "COMMUNICATIONS" LABEL ON COVER. PROVIDE LOCKABLE COVER FOR SECURITY.
3. SUMP: MANHOLE TO INCLUDE 12" DIAMETER BY 4" DEEP SUMP RECESS FILLED WITH PEA GRAVEL.
4. LADDER: PROVIDE HOOK LADDER ATTACHED TO LADDER BRACKET.
5. GROUND ROD: PROVIDE GROUND ROD SIZED PER MANUFACTURER RECOMMENDS.
6. CRUSHED STONE: PROVIDE A LAYOUT OF CRUSHED STONE UNDER BASE OF MANHOLE.



W.06

COMMUNICATIONS DUCT BANK DETAILS



DETAIL GENERAL NOTES:

- A. CONDUITS QUANTITIES AND SIZES ARE SHOWN FOR REFERENCE ONLY TO HELP REPRESENT TYPICAL INSTALLATION REQUIREMENTS. REFER TO SITE PLAN AND RACEWAY ONE-LINE FOR SPECIFIC CONDUIT QUANTITIES AT EACH LOCATION.
- B. MAINTAIN MINIMUM OF 12-INCH CLEAR SEPARATION BETWEEN ELECTRICAL AND COMMUNICATIONS CONDUITS.
- C. CONDUIT DEPTH SHOWN IS MINIMUM MOUNTING DEPTH TO TOP OF CONDUITS. CONDUITS SHALL BE SLOPED GRADUALLY AWAY FROM BUILDING.
- D. EXCAVATION OF CONDUIT SHALL BE GRADUALLY SLOPED TO MEET 10:1 BEND RADIUS OF CONDUIT TURNS UP INTO COMM ROOMS. A MINIMUM OF 30-FEET SHALL BE PROVIDED PRIOR TO TURNING UP.

DETAIL NOTES (#)

1. PROVIDE 4-INCH RIGID PVC CONDUIT FOR INCOMING SERVICE.
2. NOT USED.
3. PROVIDE DUCT SPACERS (TYPICAL).
4. PROVIDE REBAR AS REQUIRED WHERE DUCTBANK IS ROUTED BENEATH ROADWAY OR FIRE LANES. COORDINATE WITH CIVIL DRAWINGS. PROVIDE #2 REBAR DOWELS AT ALL VAULT INTERFACES.
5. BURIAL DEPTH: DUCT SHALL BE BURIED BELOW FROST LINE PENETRATION DEPTH. COORDINATE DEPTH REQUIREMENTS WITH REGIONAL FROST DEPTHS.

GENERAL NOTES

- A. REFER TO LEGEND SHEET - SCOPE MATRIX FOR ADDITIONAL REQUIREMENTS.
- B. REFER TO CIVIL AND LANDSCAPE DRAWINGS FOR ALL FINAL LOCATION OF COMMUNICATION PATHWAY. ITEMS TO COORDINATE INCLUDE BUT NOT LIMITED TO: PATHWAY LOCATIONS, TRENCH DEPTH AND GRADING.
- C. ALL DEVICES AND PATHWAYS SHOW FOR QUANTIFICATION PURPOSES ONLY. REFER TO CIVIL AND LANDSCAPE DRAWINGS FOR FINAL INSTALLATION REQUIREMENTS.
- D. ALL CUT-OVER WORK REQUIRED TO KEEP / PUT EXISTING SYSTEMS INTO WORKING ORDER SHALL BE COORDINATED WITH UNMH PRIOR TO WORK BEGINNING.
- E. PROTECT ALL DUCT BANKS AND UTILITY LINES FROM HEAVY CONSTRUCTION EQUIPMENT TRAVEL AND POSITIONING. PROTECT BURIED UTILITIES IN PLACE.
- F. ALL SITE WORK SHALL BE APPROVED AND MANAGED BY UNMH IT GROUP. COORDINATE ALL SITE WORK AND SCHEDULING WITH UNMH IT GROUP PRIOR TO BEGINNING WORK. GEORGE THORNING - 505-277-3037

KEYNOTES

- 102 MAKE READY SCOPE OF WORK BOUNDARY: UNLESS NOTED OTHERWISE, THE EXTENT OF THE WORK WITHIN THE MAKE READY BOUNDARY LINES IS SURFACE WORK. PROTECT IN PLACE ALL COMMUNICATION DUCT BANK, CONDUIT, BURIED CABLE AND DUCT ACCESS LOCATIONS. IF A COMMUNICATION DUCT, CONDUIT, DUCT ACCESS LOCATION OR PEDESTAL IS DISCOVERED IN ADDITION TO THAT IDENTIFIED HEREIN, STOP FURTHER WORK IN THIS AREA AND NOTIFY ARCHITECT / ENGINEER AND WAIT FOR DIRECTION.
- 115 TRAFFIC RATED DUCT BANK: DUCT BANK SHALL BE REINFORCED CONCRETE ENCASED FOR STREET TRAFFIC.
- 121 EXISTING DUCT BANK ACCESS: TERMINATE NEW DUCT AT EXISTING DUCT ACCESS.
- 128 BLUE PHONE LOCATION: PROVIDE (2) 1" CONDUITS FROM EXISTING HAND HOLE X-BP TO NEW BLUE PHONE LOCATION.



HDR ARCHITECTURE
1670 BROADWAY
SUITE 3400
DENVER, CO 80202

fbt Architects
6501 AMERICAS PKWY NE., STE. 300
ALBUQUERQUE, NM 87110



UNIVERSITY OF NEW
MEXICO HOSPITALS
New Hospital Tower

PHASE I - MAKE READY
100% CD

1919 LOMAS BLVD. NE
ALBUQUERQUE, NM 87106



HOSPITALS

Project Manager	-
Project Designer	-
Project Architect	FBT ARCHITECTS
Landscape Architect	HDR ARCHITECTURE, INC.
Civil Engineer	BOHANNAN HUSTON INC.
Structural Engineer	WALKER PARKING CONSULTANTS
Mechanical Engineer	HDR ARCHITECTURE, INC.
Electrical Engineer	HDR ARCHITECTURE, INC.
Plumbing Engineer	HDR ARCHITECTURE, INC.
Interior Designer	-
Equipment Planner	ST. ONGE COMPANY
Wayfinding	-

Sheet Reviewer SHANE ERWIN

MARK	DATE	DESCRIPTION
3	TBD	SITE ASI
4	10/28/2020	PHASE I - ASI 005

Project Number 10168896
Original Issue 07/24/2020

Sheet Name

SITE PLAN

Sheet Number

T-050.MR

Project Status
PHASE I - MAKE READY - 100% CD

